

Origami-EC status update for the G505s



Embedded
Freedom

Paul Kocialkowski
contact@paulk.fr

Sunday October 29th 2017

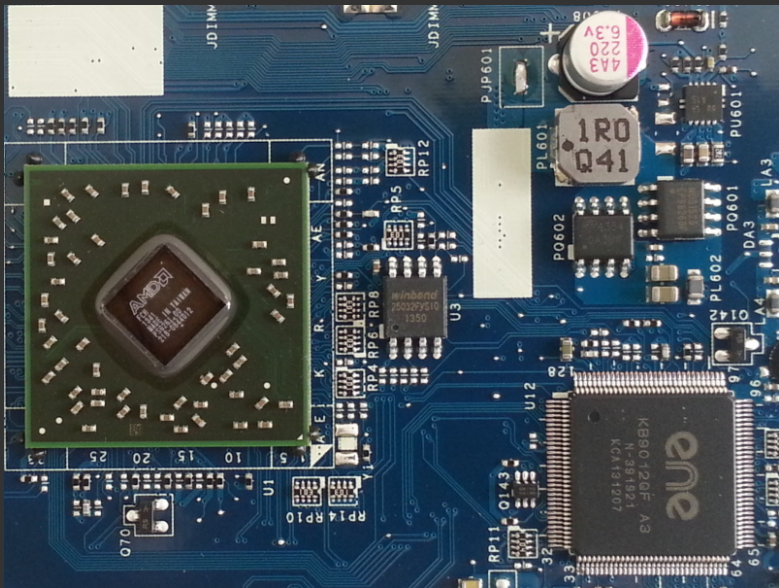


*EUROPEAN COREBOOT
CONFERENCE 2017*

KB9012 EC on the G505s

Straight from SF (2016)

Hardware Investigation



Documentation

Laptop (G505s) documentation:

- Full schematics:
Lenovo G405S Compal VALGC_GD LA-A091P.pdf
- Power sequencing diagram
- No PCB layout, labels

EC (KB9012) documentation:

- Extensive datasheet:
 - Platform description
 - Registers description
- Some application notes

KB9012 Platform Description

KB9012 platform:

- 8051-based CPU:
 - 8-32 MHz clock frequency
 - 8-bit words
 - Memory layout: program, external, internal, SFR
 - Interrupt controller, timers
 - Specific extensions
- Storage memory (128 kiB flash)
- Volatile memory (4 kiB SRAM)
- Controllers:
 - LPC, SMBUS (I2C), SPI
 - GPIO, ADC, DAC
 - Keyboard, PS/2
 - IR, FAN, OW
 - Some more

Serial and Debug Output

Serial port:

- UART from the 8051 CPU
- Exported to:
 - PCI-e
 - Pads (*JP3*)

KSTART!R

EF-01,E7,E0,ON01,NON1N2N3N4N5N6EXN7

EF-01,E0,F0,N8NANANANANANANBNBNBNBNBNBNBNB

I52,KC52,DA4,KDA4,000,NB0,

e59,Kc59,dE9,KdE9,

KzFF,NB

I52,KC52,DA4,KDA4,000,0,

e59,Kc59,NBdE9,KdE9,NBNBNBNB

MC4E,MDED,

EF-01,E0,ED,MrFF,

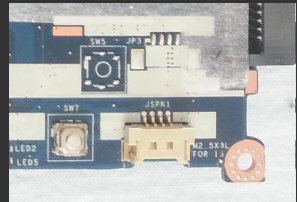
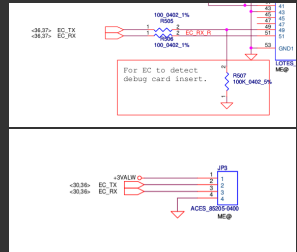
MC4E,MDEC,

EF-01,E0,EC,Mr06,NBVFF,NBC,RFA,OFA,RAA,K20

MC42,MD00,

MC4E,MDEB,

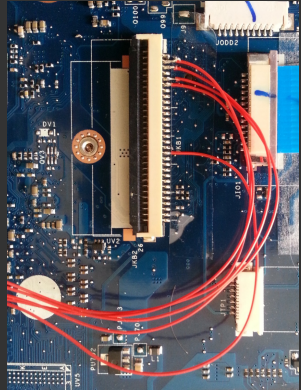
EF-01,E0,EB,Mr55,0,NB



Flashing the Firmware

Internal memory access:

- X-Bus interface, commands
- LPC Index-I/O:
 - CrOS Flashrom support (KB9xx)
 - Firmware-disabled
- ENE Debug Interface (EDI):
 - SPI protocol
 - Application note (commands)
 - Keyboard pins



Flashrom support (under review)!

Origami-EC Project

Origami-EC Introduction

Origami Embedded Controller firmware (Origami-EC)

A flexible free software embedded controller firmware implementation for 8051-based platforms.

- Written in C, SDCC toolchain
- Flexible implementation, not only KB9012
- Personal git: <https://git.code.paulk.fr> (temporary)
- GPLv3+ license

Origami-EC Architecture

Code directions:

- Generic APIs
- Platform and device-specific implementations
- Common code (AMAP)
- Tasks with priorities
no context switching

Origami-EC Current Support

Supported features:

- Console, commands
including history
- LEDs
- Buttons, switches
- Early power on implementation
not there yet
- Segments remapping support
- EC suspend mode

Origami-EC Current and Future Work

Work in progress:

- Battery support (SBS)
- Charging

Future work:

- Proper boot support
- Host communication (LPC)
- Keyboard support
- Peripherals support
- Advanced power management (*suspend/resume*)

Thank-You!

Questions?